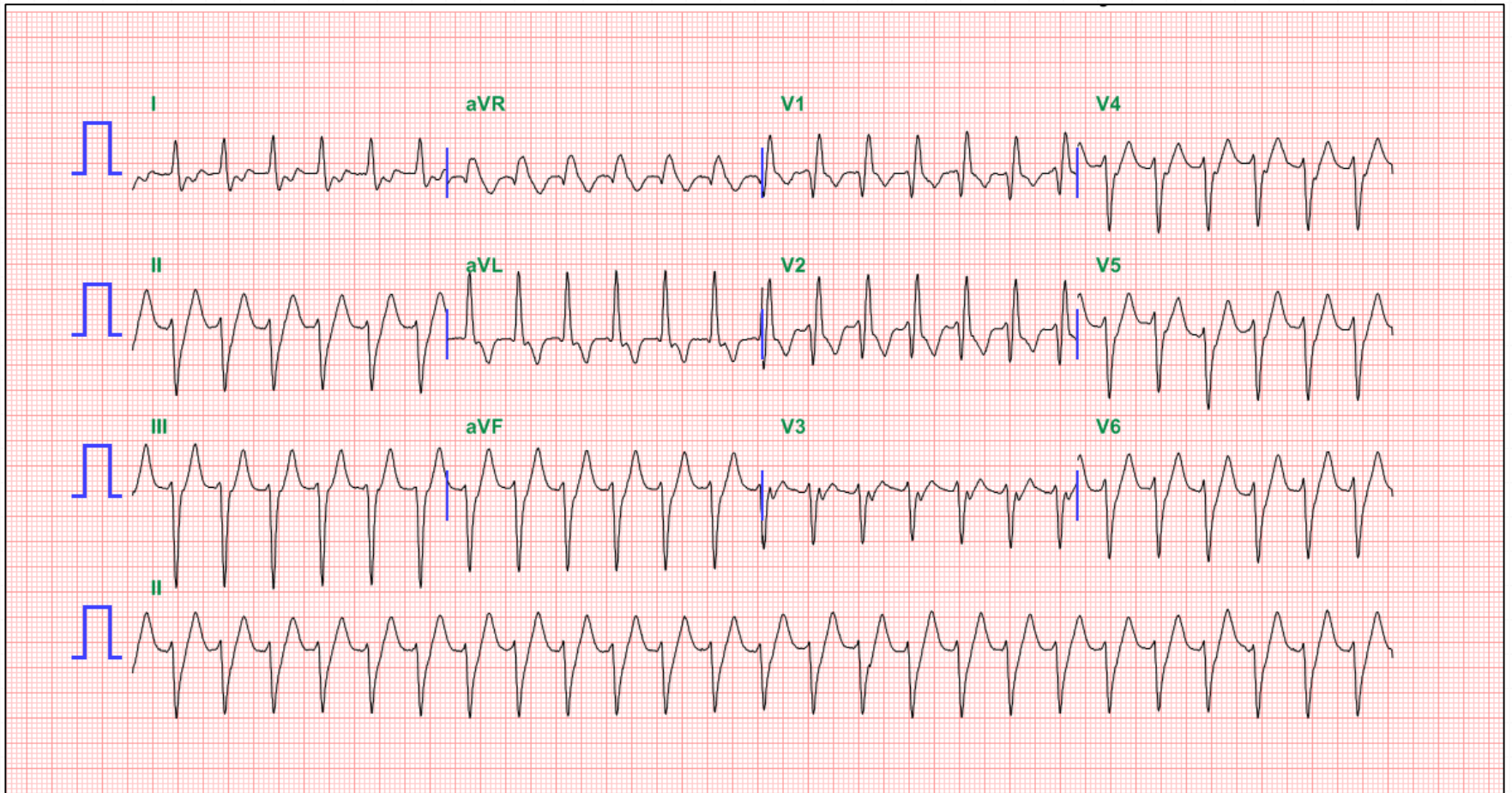


VT Ablation with Cartosound™

Hyung-Seob Park

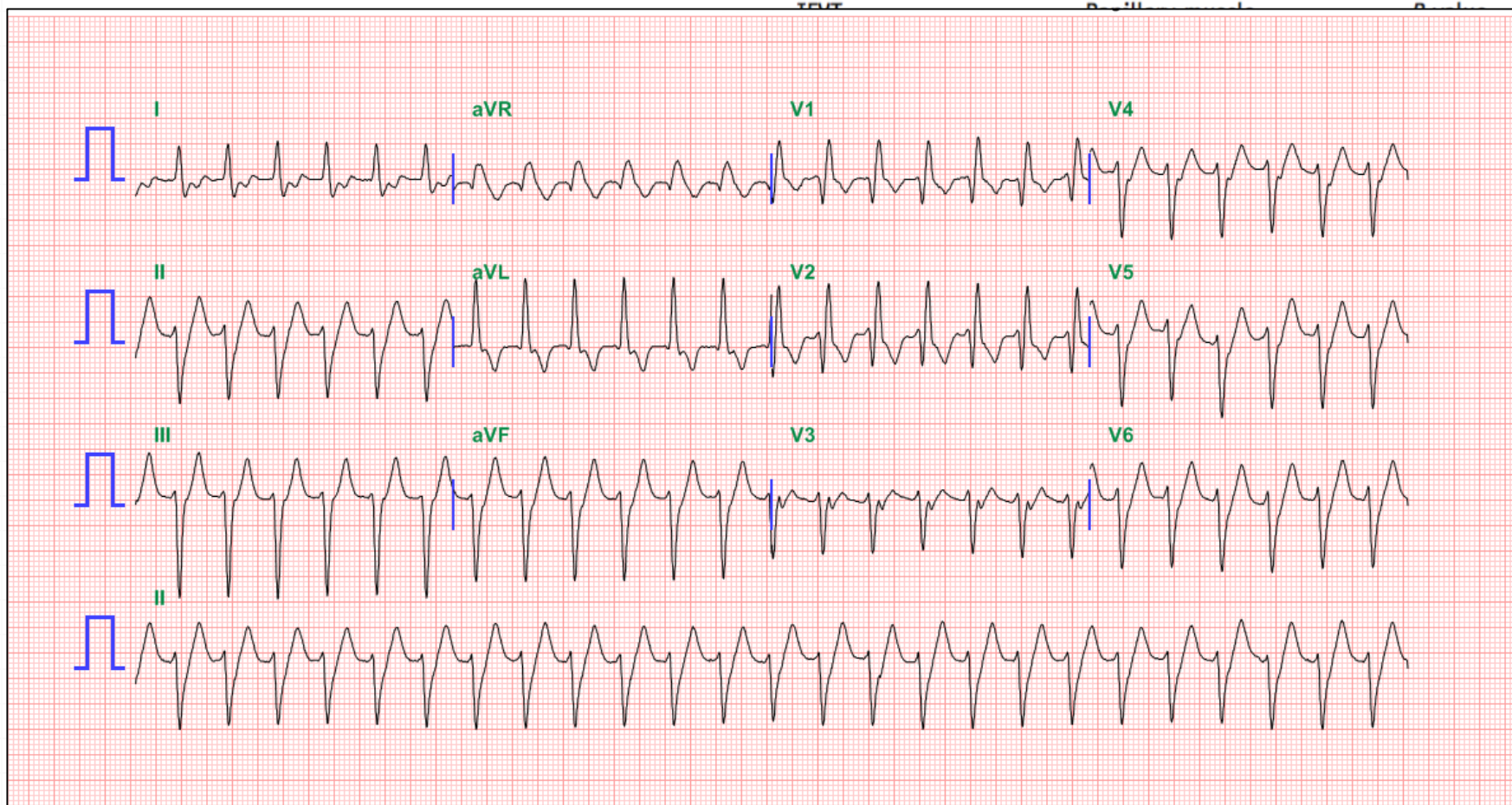
Keimyung University Dongsan Medical Center, Daegu, South Korea

38 year-old male, recurrent palpitation



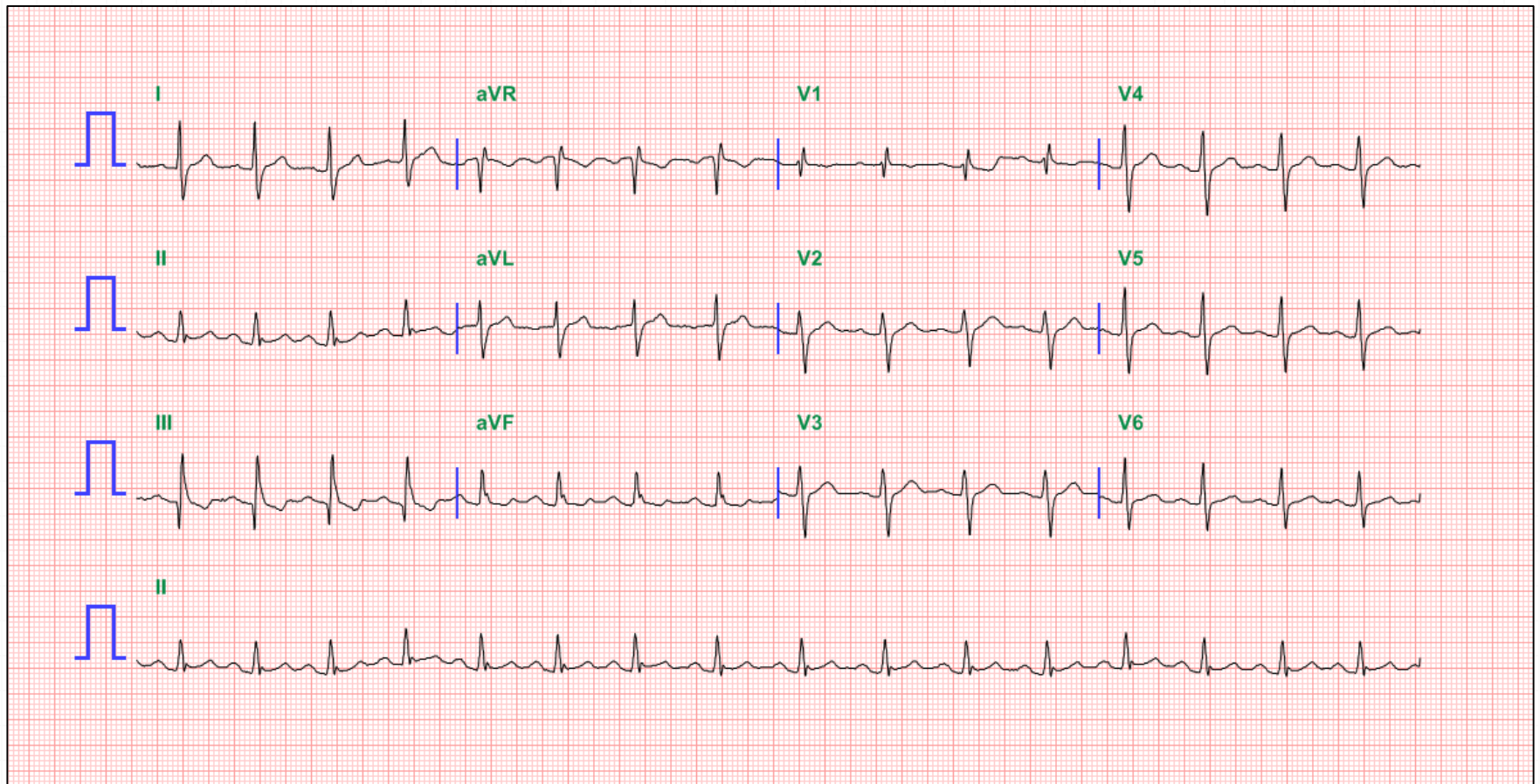
Fascicular VT vs. Papillary m. VT

Table 1 Comparison of characteristics of patients with idiopathic fascicular VT and arrhythmias originating from the papillary muscles

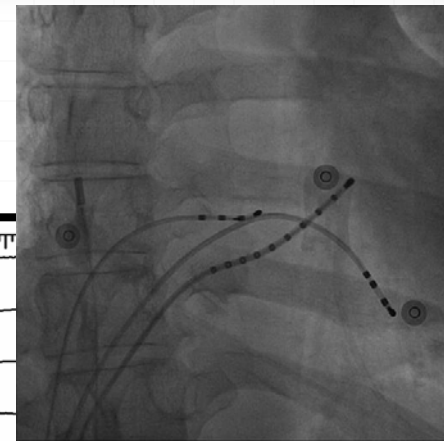


RBSA = right bundle branch block superior axis morphology; RF = radiofrequency energy; SR = sinus rhythm; VT = ventricular tachycardia.

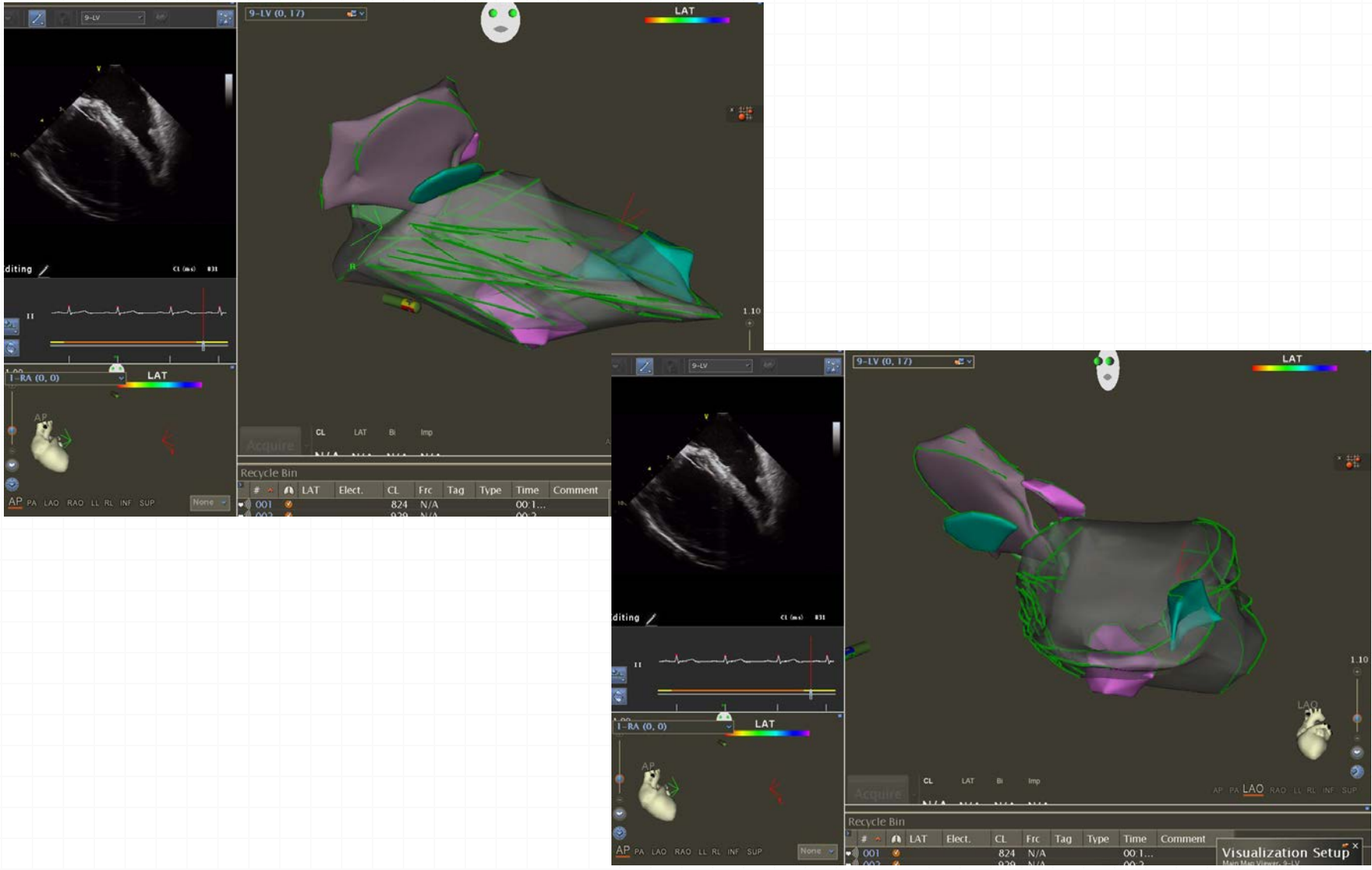
ECG after SR conversion



Baseline



LV Cartosound Map



V 350ms : Tachycardia induction



Ventricular Tachycardia



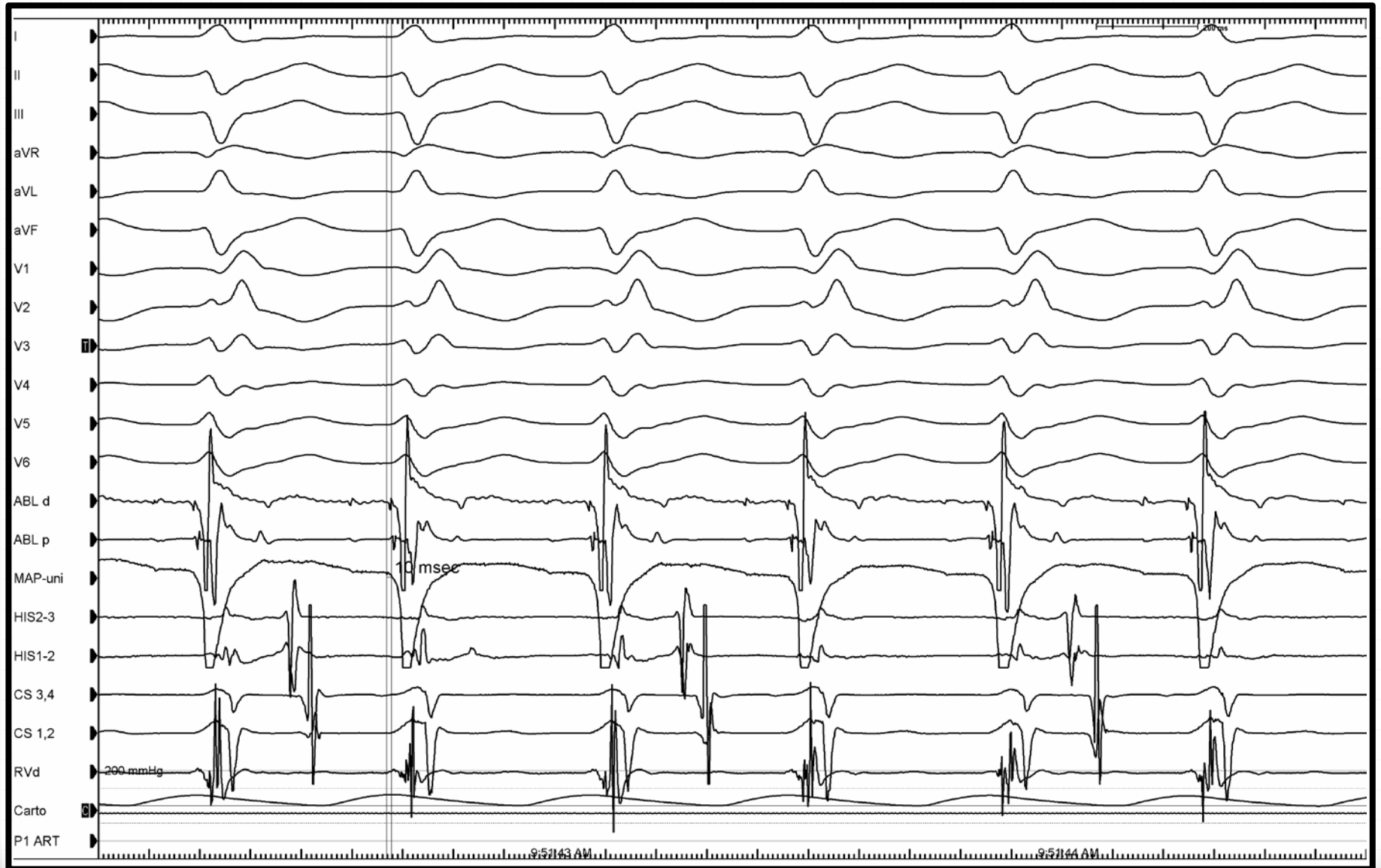
Termination by V pacing



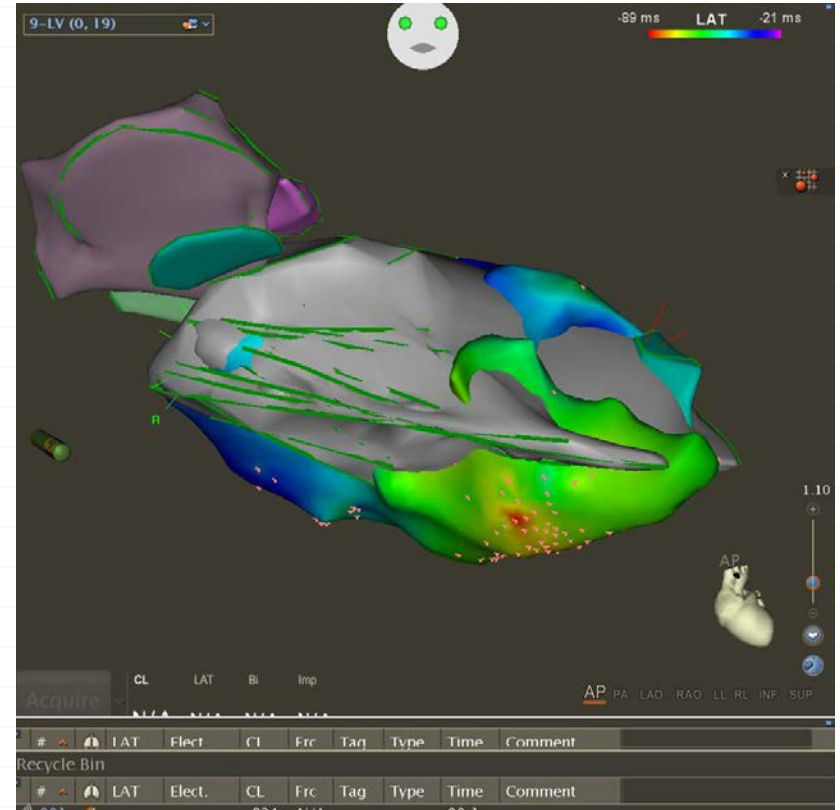
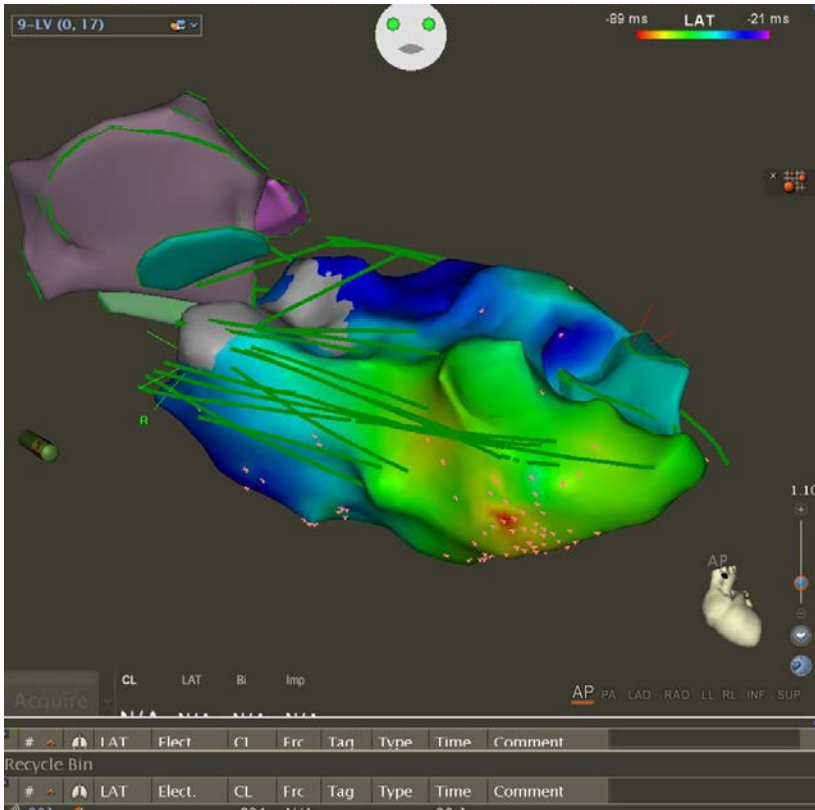
V 300ms : VT induction



Mapping : LV-mid septum



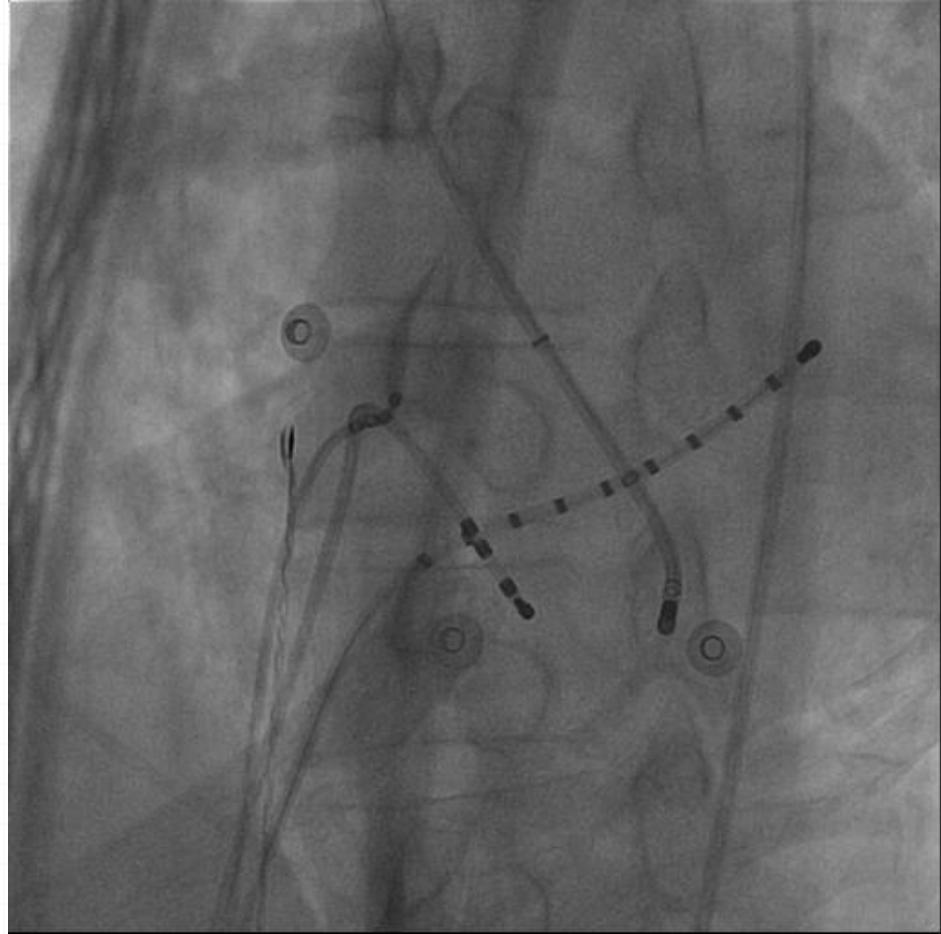
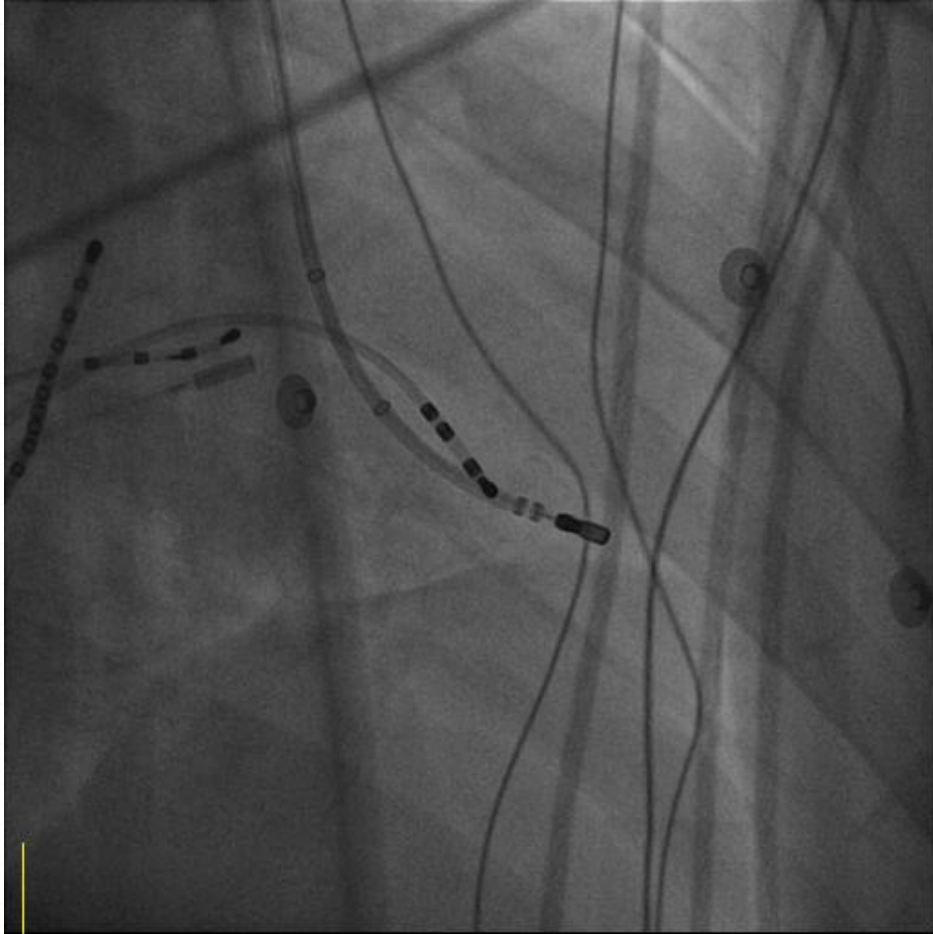
Activation Mapping



Successful ablation site



Ablation Site



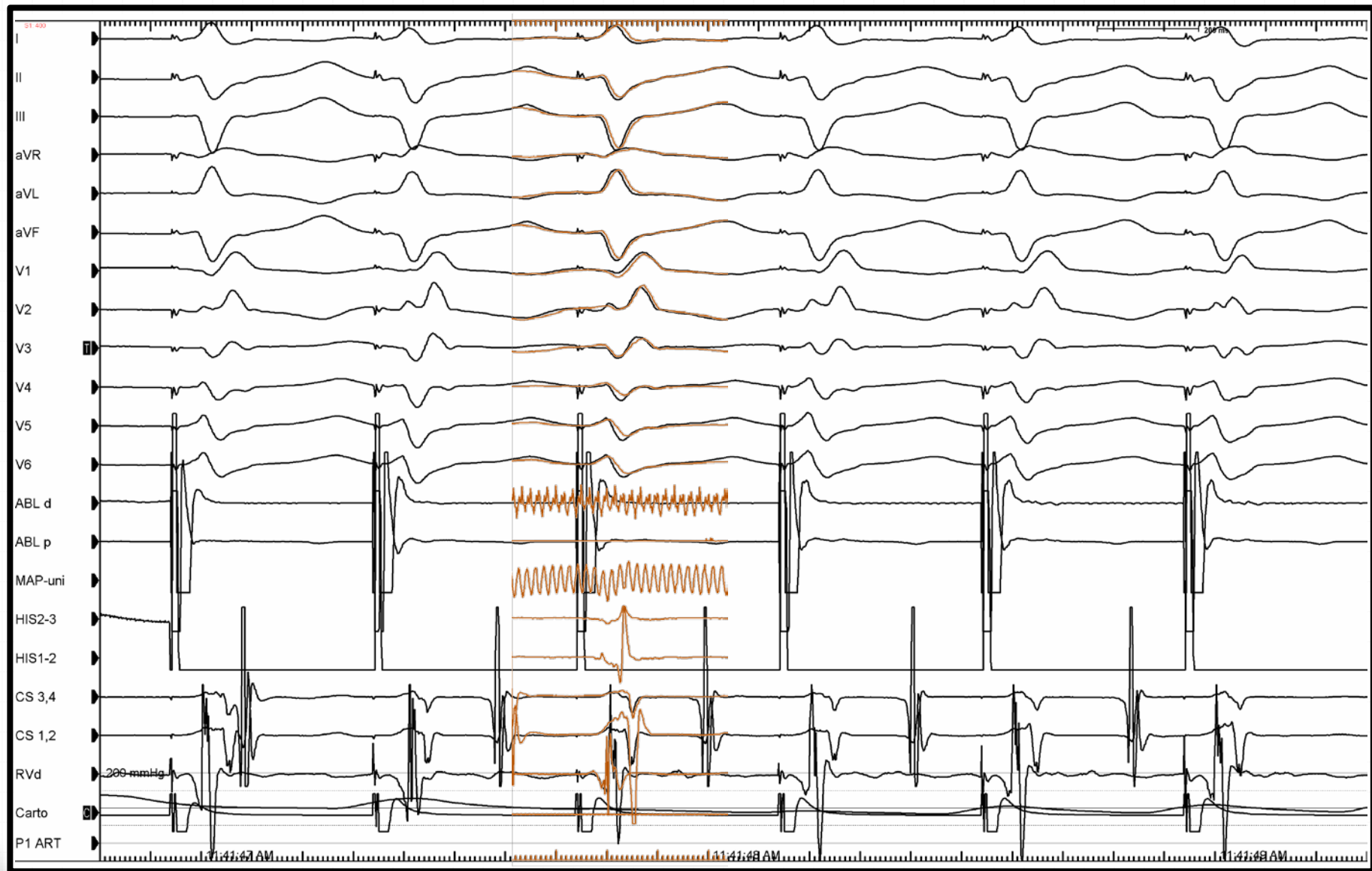
Ablation on : termination



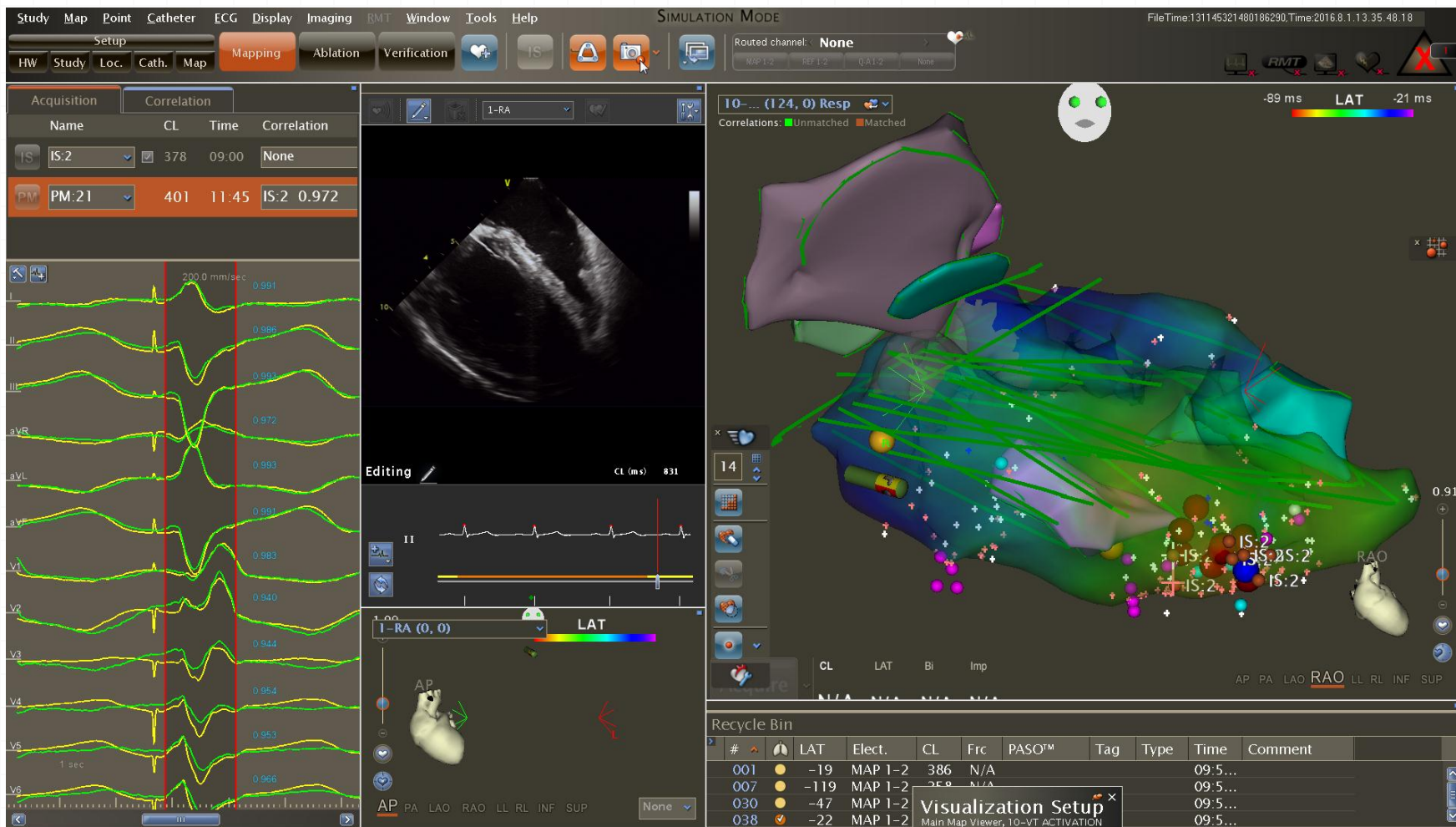
Signals at ablation success site



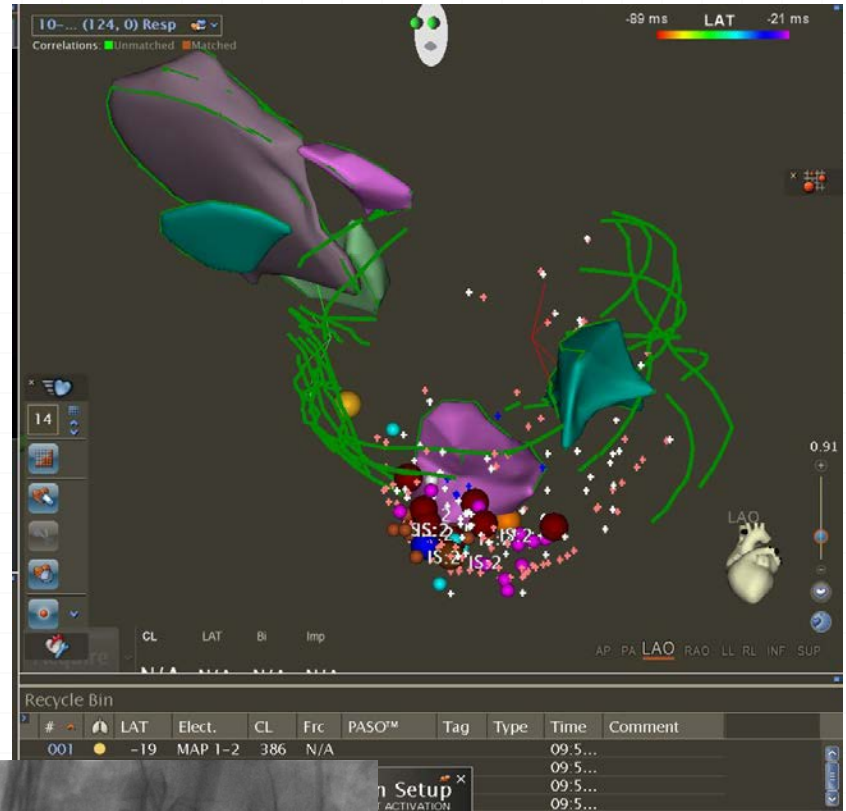
Pacemap at success site



Pacemap with PASSO



Ablation Site



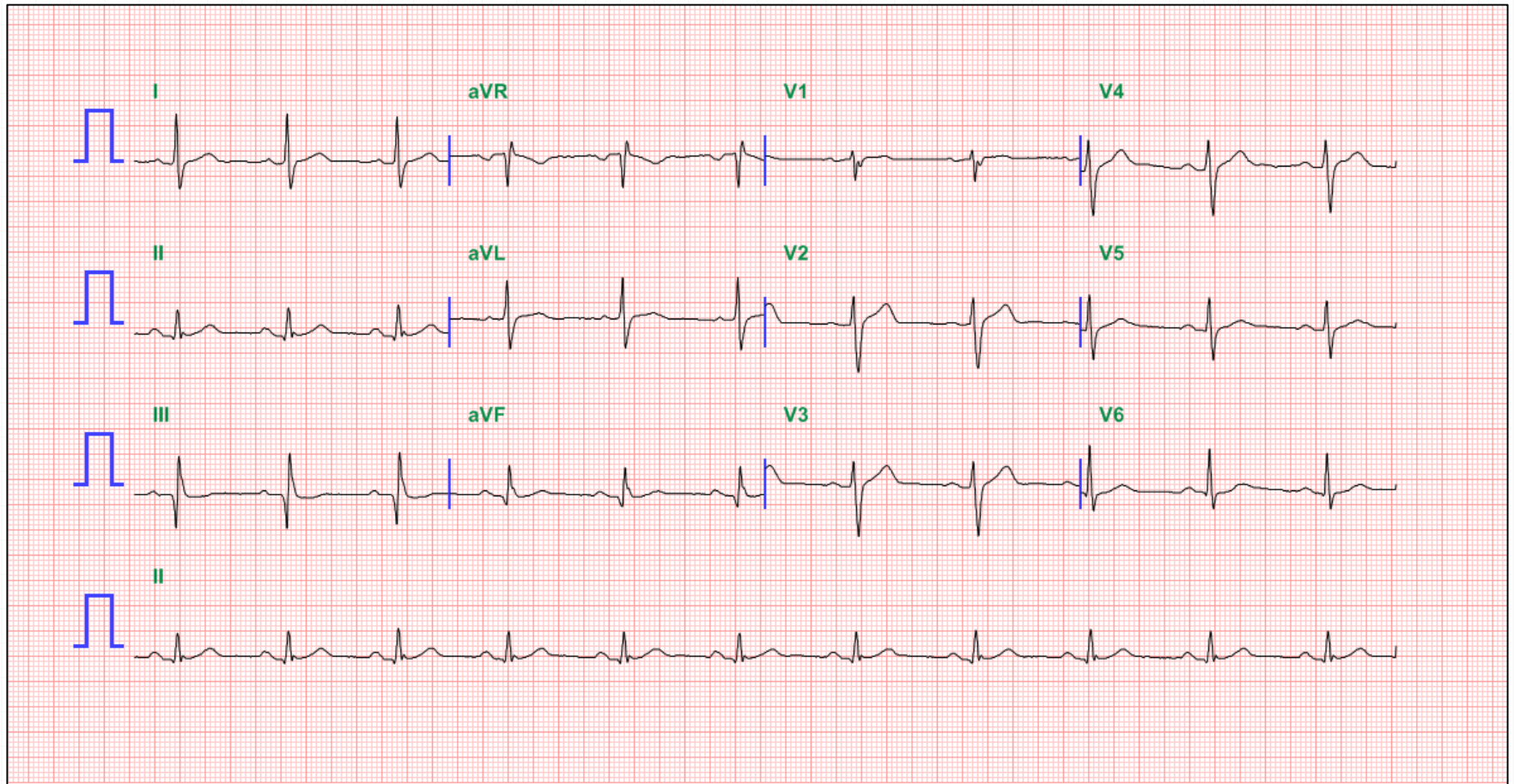
Ablation Site



V 260ms : No inducible tachycardia



Follow-up ECG





Thanks for your attention !!